

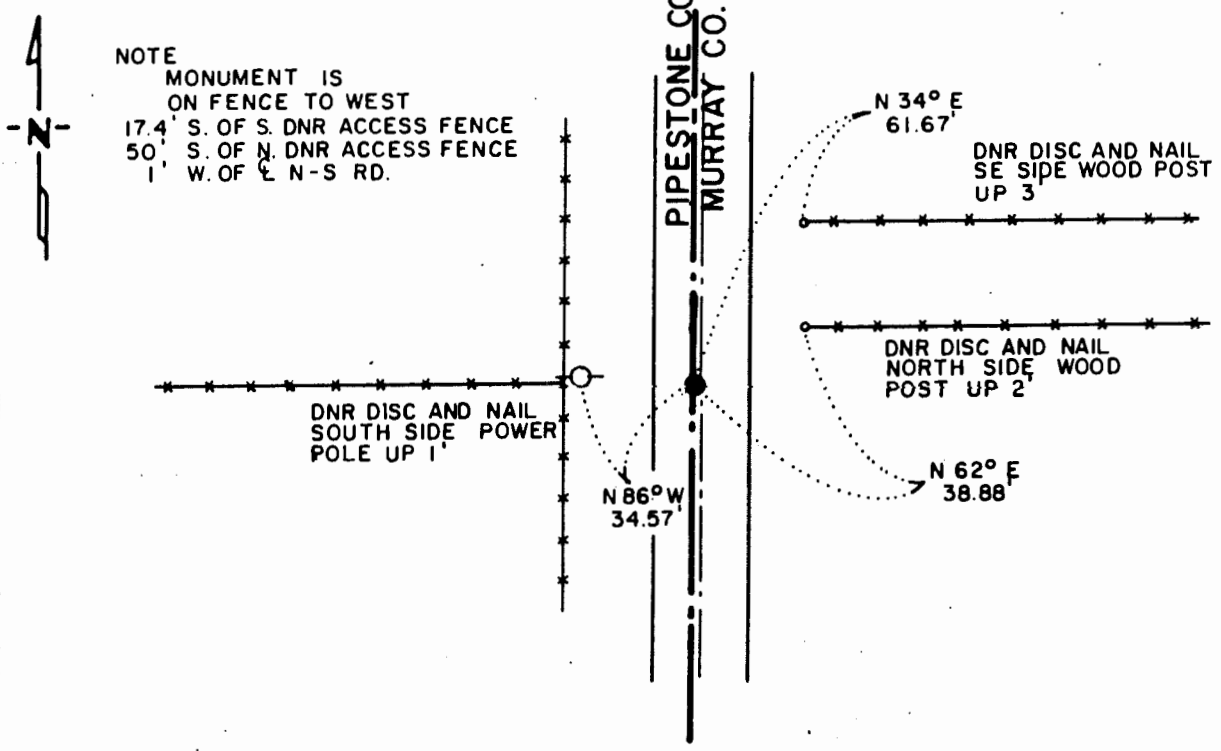
# CERTIFICATE OF LOCATION OF GOVERNMENT CORNER

WEST QUARTER Corner of Section 7, Township 108 N., Range 43 W., 5th P.M.  
STATE OF MINNESOTA, County of MURRAY

At the corner location shown on the sketch:

- On \_\_\_\_\_ found a \_\_\_\_\_  
DATE
- left monument as found,  lowered monument,  removed monument (explain)
- On 4-27-83 placed a 1 1/4" x 1 1/4" x 20" PERFORATED STEEL TUBE WITH  
DATE ALUMINUM CAP STAMPED "DNR SURVEY MARKER," DOWN 0.3'

### SKETCH OF REFERENCE TIES



TIES TAKEN 8/5/86  
BEARINGS OBSERVED WITH COMPA33

Statement of evidence relative to this corner location is on back of page.

J. A. G. 8-12-86  
FILE G-202

I hereby certify that this document and the data contained herein was prepared by me or under my direct supervision.

Lowell B. Pomeroy 9-10-86  
SIGNATURE DATE

Registration No. 17005  
 Land Surveyor,  Professional Engineer  
 County Surveyor,  County Engineer

OFFICE OF THE COUNTY RECORDER  
County of \_\_\_\_\_

I hereby certify that this document was filed in the Co. Recorders office at \_\_\_\_\_ M. on the \_\_\_\_\_ day of \_\_\_\_\_ A.D., 19 \_\_\_\_\_

County Recorder \_\_\_\_\_  
By \_\_\_\_\_, Deputy  
DOCUMENT NO. \_\_\_\_\_

West Quarter Corner Section 7, Township 108 North, Range 43 West

This corner was originally established by the U. S. General Land Office survey in 1861. The government notes show corner marked with a wood post set in mound of earth with pits and trench dug around the mound also deposited charcoal.

In June 1982, the DNR Bureau of Engineering contacted the following for corner information:

Murray County Offices of the Recorder and Highway Engineer  
Pipestone County Office of the Recorder

No resurvey information was obtained for this corner.

In August 1953, the DNR Bureau of Engineering traversed to the area of the corner and located the center line of a north-south road, a fence line east and a fence line west. The fence line east is 50.5 ft. north of the fence line west. A hub was set for the corner at the intersection of the road north-south and fence line east.

In June 1955, the DNR Bureau of Engineering used the fence east as marking the location of the quarter line of Section 7.

In June 1982, the DNR Bureau of Engineering traversed to the area of the corner and located the center line of a north-south road, a fence line east and a fence line west. The fence line east is 51 ft. north of the fence line west. Found no evidence of a monument.

On July 7, 1982, the DNR Bureau of Engineering hired a backhoe operated by Buffalo Ridge Plumbing and Heating of Ruthton to dig for evidence of this corner. Dug two 6 ft. east-west by 8 ft. north-south holes, the center of holes being:

- 1) on center line of road in line with fence east
- 2) on center line of road in line with fence west

Found well-deteriorated wood posts running north-south in both holes on center line of road. Natural ground was encountered down 24", found nothing else. Talked with area landowner who owns both sides of fence west. Landowner stated fences have been in area since she moved there 30 years ago. Landowner talked to another resident who stated fences were in since 1912, but there was a cartway to the east. At the time, there was no road to the north or south. Computed the lost position for the corner and found it to be:

2655.77 ft. from adjoining section corners  
in line with fence west, 50 ft. south of fence east  
1 ft. west of center line north-south road

Checked a 1955 airphoto which shows occupation as it exists today.

Accept the lost position as the location of the corner.

Traverse information is available from the DNR Bureau of Engineering.

On August 5, 1986, revisited the corner and found the DNR Survey Marker as previously set in good condition and took ties as shown.